

DistriCool

3,5t UP TO 19t GVW TRUCK BODY SOLUTIONS FOR COOLED TRANSPORT



DistriCool



PLV8



PLV3

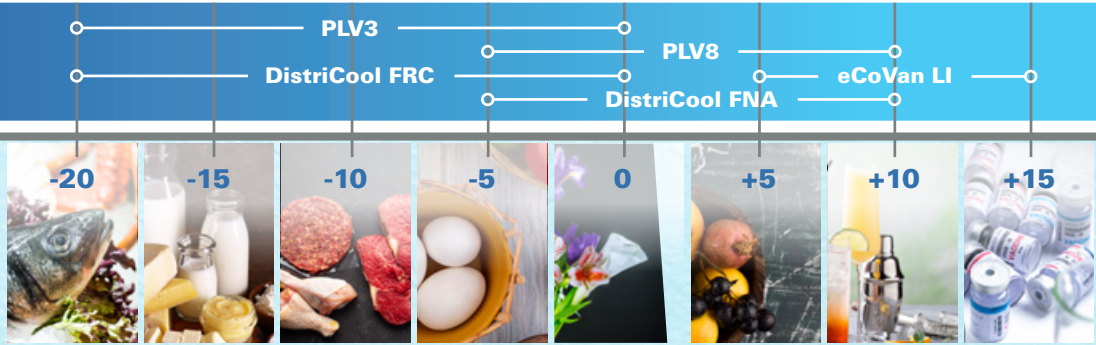


eCoVan LI

25

 YEARS

 EXPERIENCE



MAXIMAL FLEXIBILITY FOR YOUR LOGISTIC PLAN



Single side door



Double side door



Cold retaining strips



Rear frame with rear doors



Rear frame for roller shutter



Triple rear door



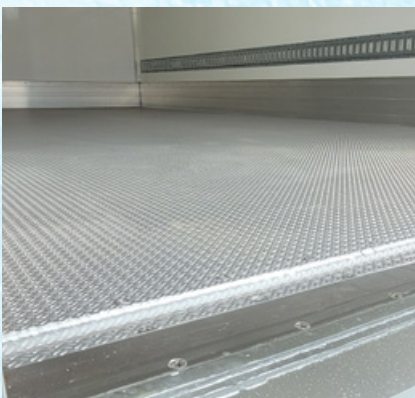
Longitudinal partition wall



Transversal partition wall
movable and tiltable



Longitudinal partition wall
with door at the end



AluRice floor finish with gutter



PolyGrip floor finish



Lashing rails multiple heights



DESIGNED FOR PALETTISED TRANSPORT

the PLV3 and PLV8 bodies allow easy palletised transport with standard Euro pallets (800mm*1200mm)

YOUR DISTRICOOL TRUCK BODY DELIVERED AS KIT OR PRE-ASSEMBLED BOX: THE CHOICE IS YOURS

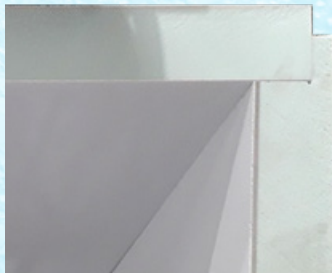
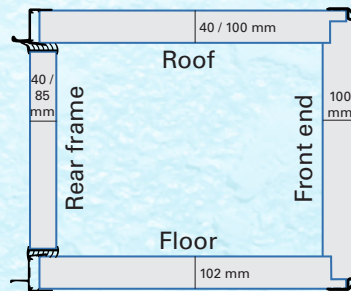
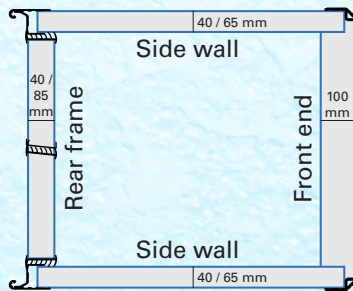
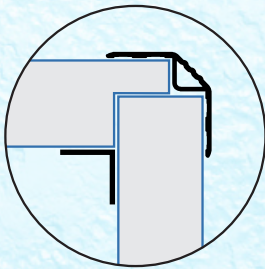


All necessary items for a quick and easy assembly are included: in about 8 man-hours you have your DistriCool truck body assembled. You can opt for the 1 component MS polymere or the 2 component PU glueing method.



Super easy and quick...
Box with pre-assembled subframe to be mounted on your vehicle

PLV8 / PLV3

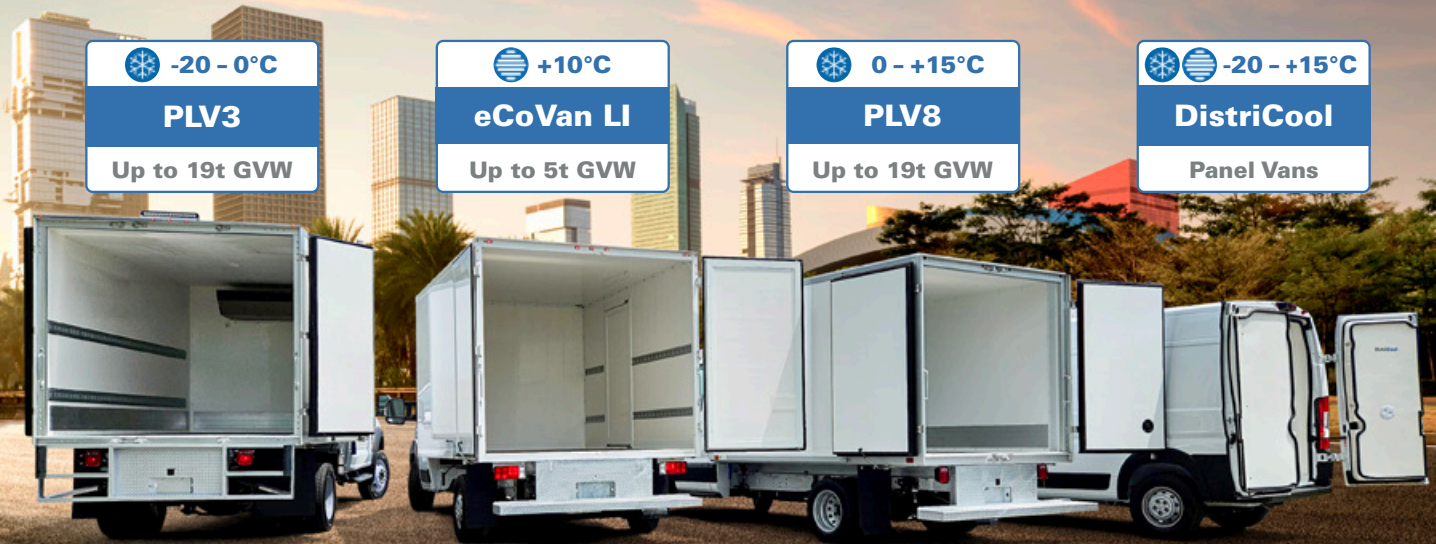


IDEAL FOR LIGHT TO MEDIUM WEIGHT TRUCKS

Our wide range of bodies for deepfreeze, refrigerated and light insulated transport is suitable for commercial vehicles with a gross vehicle weight from 3,5t to 19t, covering the most demanded transport applications.



ATP CERTIFIED SOLUTIONS FOR AN EFFICIENT AND RELIABLE TRANSPORT OF PERISHABLES.



-20 - 0°C
PLV3
Up to 19t GVW

+10°C
eCoVan LI
Up to 5t GVW

0 - +15°C
PLV8
Up to 19t GVW

-20 - +15°C
DistriCool
Panel Vans

ATP CERTIFIED INSULATION



FRC
Certificate available

The **PLV3** and the **DistriCool FRC** version boast an excellent K-value of 0,4W/m² which makes him particularly suitable for the transportation of products in the temperature range from 0°C up to minus 20°C. Ideal for transporting deepfrozen foods, fish, meat, poultry, game



FNA
Certificate available

The **PLV8's** and the **DistriCool FNA's** K-value is 0,7W/m², for transporting goods in the temperature range from +15 °C up to 0°C. So perfect for fresh fruits, vegetables, flowers, cooked dishes, dairy products ...



COMPATIBLE WITH ALL BRANDS OF COOLING UNITS

Equipped to allow all types of cooling units on the market. Both for split units or monoblocks. We know what inserts to provide in front end and roof to mount the evaporator and condensers of your choice.



TEVC Sp. Z o.o. ul.
Ceramiczna 12
PL-26-200 Konskie
+48 (0)41 375 11 78



Alvan bv.
Laconiastraat 1B
B-8000 Brugge
+32 (0)50 31 25 13

ONLY THE BEST, FROM PANEL TO BODYKIT